

Appendix A – Tabulated Results and Figures

Laboratory Results for PFAS (Groundwater)
(All concentrations reported in ng/L)
(Shaded values exceed screening level)

Analyte	CAS Number	MW-4-S5-112822	DUP-1-112822 (MW-4-S5)	MW-4-S4-112822	MW-4-S2-112822	USEPA Tap Water RSLs ¹ (May 2023)	USEPA Proposed NPDWR ²	SWRCB DDW NL ³
PFBA	375-22-4	0.36 J	0.61 J	0.18 U	2.00 J	1,800	NE	NE
PFPEA	2706-90-3	0.72 J	1.00 J	0.46 J	3.80	NE	NE	NE
PFHXA	307-24-4	0.48 J	0.97	0.33 J	2.30	990	NE	NE
PFHPA	375-85-9	0.28 J	0.41 J	0.18 J	0.89	NE	NE	NE
PFOA	335-67-1	0.27 J	0.94 J	0.40 J	1.10	6	4	5.1
PFNA	375-95-1	0.19 U	0.18 U	0.18 U	0.18 U	5.9	HI<1	NE
PFDA	335-76-2	0.19 U	0.17 J	0.18 U	0.18 U	NE	NE	NE
PFUnA	2058-94-8	0.19 U	0.18 U	0.18 U	0.18 U	NE	NE	NE
PFDOA	307-55-1	0.19 U	0.18 U	0.18 U	0.18 U	NE	NE	NE
PFTRDA	72629-94-8	0.19 U	0.18 U	0.18 U	0.18 U	NE	NE	NE
PFTEDA	376-06-7	0.19 U	0.18 U	0.18 U	0.18 U	NE	NE	NE
PFBS	375-73-5	0.79	4.90	0.39 J	2.90	600	HI<1	500
PFPEs	630402-22-1	0.40 J	0.29 J	0.24 J	1.20	NE	NE	NE
PFHXS	355-46-4	0.42 J	0.44 J	0.28 J	2.00	39	HI<1	3
PFHPS	375-92-8	0.19 U	0.18 U	0.18 U	0.18 U	NE	NE	NE
PFOS	1763-23-1	0.14 J	0.18 U	0.15 J	0.20 J	4	4	6.5
PFNS	98789-57-2	0.37 U	0.35 U	0.36 U	0.36 UJ	NE	NE	NE
PFDS	335-77-3	0.19 U	0.18 U	0.18 U	0.18 U	NE	NE	NE
FTS 4:2	757124-72-4	0.37 U	0.35 U	0.36 U	0.36 U	NE	NE	NE
FTS 6:2	27619-97-2	0.19 UJ	0.18 UJ	0.40 J	0.18 UJ	NE	NE	NE
FTS 8:2	39108-34-4	0.56 UJ	0.53 UJ	0.55 UJ	0.54 UJ	NE	NE	NE
PFOSA	754-91-6	0.19 U	0.18 U	0.18 U	0.18 U	NE	NE	NE
N-MEFOSA	31506-32-8	1.90 UJ	1.80 UJ	1.80 U	1.80 U	NE	NE	NE
N-ETFOSA	4151-50-2	1.90 UJ	1.80 UJ	1.80 U	1.80 U	NE	NE	NE
N-MEFOSAA	2355-31-9	0.19 U	0.18 U	0.18 UJ	0.18 UJ	NE	NE	NE
N-ETFOSAA	2991-50-6	0.19 U	0.21 J	0.18 U	0.18 U	NE	NE	NE
N-MEFOSE	24448-09-7	1.10 UJ	1.10 UJ	1.10 U	1.10 U	NE	NE	NE
N-ETFOSE	1691-99-2	1.10 UJ	1.10 UJ	1.10 UJ	1.10 UJ	NE	NE	NE
HFPO-DA	13252-13-6	0.93 U	0.88 U	0.91 U	0.90 U	6	HI<1	NE
ADONA	919005-14-4	0.56 U	0.53 U	0.55 U	0.54 U	NE	NE	NE
9-Cl-PF3ONS	756426-58-1	0.56 U	0.53 U	0.55 U	0.54 U	NE	NE	NE
11-Cl-PF3OUdS	763051-92-9	0.56 U	0.53 U	0.55 U	0.54 U	NE	NE	NE

Notes

¹USEPA Regional Screening Levels (May 2023): <https://www.epa.gov/risk/regional-screening-levels-rsls-generic-tables> (TR=1E-06, THQ=0.1)

²USEPA proposed National Primary Drinking Water Regulation for PFAS: <https://www.epa.gov/sdwa/and-polyfluoroalkyl-substances-pfas>

³SWRCB DDW Notification Levels: https://www.waterboards.ca.gov/drinking_water/certlic/drinkingwater/pfas.html

ng/L = nanogram per liter

DUP = Field Duplicate

J = Analyte concentration is an estimated value

NE = not established

Laboratory Results for PFAS (Groundwater)
 (All concentrations reported in ng/L)
 (Shaded values exceed screening level)

Analyte	CAS Number	MW-12-S5-112822	MW-12-S4-112822	MW-12-S3-112822	MW-12-S2-112822	USEPA Tap Water RSLs ¹ (May 2023)	USEPA Proposed NPDWR ²	SWRCB DDW NL ³
PFBA	375-22-4	0.66 J	0.41 J	0.87 J	8.10	1,800	NE	NE
PFPEA	2706-90-3	0.66 J	0.58 J	0.63 J	11.00	NE	NE	NE
PFHXA	307-24-4	1.10	0.76 J	0.53 J	9.20	990	NE	NE
PFHPA	375-85-9	0.56 J	0.34 J	0.31 J	5.00	NE	NE	NE
PFOA	335-67-1	3.50	2.10	1.40	9.50	6	4	5.1
PFNA	375-95-1	0.45 J	0.19 U	0.18 U	1.20	5.9	HI<1	NE
PFDA	335-76-2	1.10 J	0.80 J	0.23 J	0.18 U	NE	NE	NE
PFUnA	2058-94-8	0.14 J	0.19 U	0.18 U	0.18 U	NE	NE	NE
PFDOA	307-55-1	0.18 U	0.19 U	0.18 U	0.18 U	NE	NE	NE
PFTRDA	72629-94-8	0.18 U	0.19 U	0.18 U	0.18 U	NE	NE	NE
PFTEDA	376-06-7	0.18 U	0.19 U	0.18 U	0.18 U	NE	NE	NE
PFBS	375-73-5	0.36 J	0.23 J	0.24 J	7.40	600	HI<1	500
PFPEs	630402-22-1	0.18 U	0.19 U	0.09 J	0.19 J	NE	NE	NE
PFHXS	355-46-4	0.29 J	0.25 J	0.41 J	0.73	39	HI<1	3
PFHPS	375-92-8	0.18 U	0.19 U	0.18 U	0.18 U	NE	NE	NE
PFOS	1763-23-1	2.00	1.10	0.62 J	3.80	4	4	6.5
PFNS	98789-57-2	0.36 U	0.37 U	0.37 U	0.37 U	NE	NE	NE
PFDS	335-77-3	0.18 U	0.19 U	0.18 U	0.18 U	NE	NE	NE
FTS 4:2	757124-72-4	0.36 U	0.37 U	0.37 U	0.37 U	NE	NE	NE
FTS 6:2	27619-97-2	0.18 UJ	0.19 UJ	0.18 UJ	0.18 UJ	NE	NE	NE
FTS 8:2	39108-34-4	0.54 UJ	0.56 UJ	0.55 UJ	0.55 UJ	NE	NE	NE
PFOSA	754-91-6	0.29 J	0.21 J	0.18 U	0.18 U	NE	NE	NE
N-MEFOSA	31506-32-8	1.80 UJ	1.90 UJ	1.80 UJ	1.80 UJ	NE	NE	NE
N-ETFOSA	4151-50-2	1.80 UJ	1.90 UJ	1.80 UJ	1.80 UJ	NE	NE	NE
N-MEFOSAA	2355-31-9	0.48 J	0.26 J	0.18 U	0.18 U	NE	NE	NE
N-ETFOSAA	2991-50-6	0.58 J	0.31 J	0.18 U	0.18 U	NE	NE	NE
N-MEFOSE	24448-09-7	1.10 UJ	1.10 UJ	1.10 UJ	1.10 U	NE	NE	NE
N-ETFOSE	1691-99-2	1.10 UJ	1.10 UJ	1.10 UJ	1.10 UJ	NE	NE	NE
HFPO-DA	13252-13-6	0.89 U	0.93 U	0.92 U	0.91 U	6	HI<1	NE
ADONA	919005-14-4	0.54 U	0.56 U	0.55 U	0.55 U	NE	NE	NE
9-Cl-PF3ONS	756426-58-1	0.54 U	0.56 U	0.55 U	0.55 U	NE	NE	NE
11-Cl-PF3OUdS	763051-92-9	0.54 U	0.56 U	0.55 U	0.55 U	NE	NE	NE

Notes

¹USEPA Regional Screening Levels (May 2023): <https://www.epa.gov/risk/regional-screening-levels-rsls-generic-tables> (TR=1E-06, THQ=0.1)

²USEPA proposed National Primary Drinking Water Regulation for PFAS: <https://www.epa.gov/sdwa/and-polyfluoroalkyl-substances-pfas>

³SWRCB DDW Notification Levels: https://www.waterboards.ca.gov/drinking_water/certlic/drinkingwater/pfas.html

ng/L = nanogram per liter

DUP = Field Duplicate

J = Analyte concentration is an estimated value

NE = not established

Laboratory Results for PFAS (Groundwater)

(All concentrations reported in ng/L)

(Shaded values exceed screening level)

Analyte	CAS Number	MW-15-113022	USEPA Tap Water RSLs ¹ (May 2023)	USEPA Proposed NPDWR ²	SWRCB DDW NL ³
PFBA	375-22-4	0.17 U	1,800	NE	NE
PFPEA	2706-90-3	2.70	NE	NE	NE
PFHXA	307-24-4	2.00	990	NE	NE
PFHPA	375-85-9	1.50	NE	NE	NE
PFOA	335-67-1	2.50	6	4	5.1
PFNA	375-95-1	0.88	5.9	HI<1	NE
PFDA	335-76-2	0.17 U	NE	NE	NE
PFUnA	2058-94-8	0.17 UJ	NE	NE	NE
PFDOA	307-55-1	0.17 U	NE	NE	NE
PFTRDA	72629-94-8	0.17 U	NE	NE	NE
PFTEDA	376-06-7	0.17 U	NE	NE	NE
PFBS	375-73-5	0.97	600	HI<1	500
PFPEs	630402-22-1	0.17 U	NE	NE	NE
PFHXS	355-46-4	0.32 J	39	HI<1	3
PFHPS	375-92-8	0.17 U	NE	NE	NE
PFOS	1763-23-1	1.50	4	4	6.5
PFNS	98789-57-2	0.34 U	NE	NE	NE
PFDS	335-77-3	0.17 U	NE	NE	NE
FTS 4:2	757124-72-4	0.34 U	NE	NE	NE
FTS 6:2	27619-97-2	0.17 U	NE	NE	NE
FTS 8:2	39108-34-4	0.51 U	NE	NE	NE
PFOSA	754-91-6	0.17 U	NE	NE	NE
N-MEFOSA	31506-32-8	1.70 U	NE	NE	NE
N-ETFOSA	4151-50-2	1.70 UJ	NE	NE	NE
N-MEFOSAA	2355-31-9	0.17 U	NE	NE	NE
N-ETFOSAA	2991-50-6	0.17 U	NE	NE	NE
N-MEFOSE	24448-09-7	1.00 U	NE	NE	NE
N-ETFOSE	1691-99-2	1.00 U	NE	NE	NE
HFPO-DA	13252-13-6	0.85 U	6	HI<1	NE
ADONA	919005-14-4	0.51 U	NE	NE	NE
9-Cl-PF3ONS	756426-58-1	0.51 U	NE	NE	NE
11-Cl-PF3OUdS	763051-92-9	0.51 U	NE	NE	NE

Notes

¹USEPA Regional Screening Levels (May 2023): <https://www.epa.gov/risk/regional-screening-levels-rsls-generic-tables> (TR=1E-06, THQ=0.1)

²USEPA proposed National Primary Drinking Water Regulation for PFAS: <https://www.epa.gov/sdwa/and-polyfluoroalkyl-substances-pfas>

³SWRCB DDW Notification Levels: https://www.waterboards.ca.gov/drinking_water/certlic/drinkingwater/pfas.html

ng/L = nanogram per liter

DUP = Field Duplicate

J = Analyte concentration is an estimated value

NE = not established

Laboratory Results for PFAS (Groundwater)
(All concentrations reported in ng/L)
(Shaded values exceed screening level)

Analyte	CAS Number	MW-17-S5-112922	MW-17-S4-112922	MW-17-S3-112922	DUP-3-112922 (MW-17-S3)	MW-17-S2-112922	USEPA Tap Water RSLs ¹ (May 2023)	USEPA Proposed NPDWR ²	SWRCB DDW NL ³
PFBA	375-22-4	0.39 J	0.68 J	1.00 J	0.80 J	0.18 U	1,800	NE	NE
PFPEA	2706-90-3	0.83 J	1.00 J	1.80	1.90	0.18 U	NE	NE	NE
PFHXA	307-24-4	0.59 J	1.00 J	1.20	1.40 J	0.18 U	990	NE	NE
PFHPA	375-85-9	0.28 J	0.82	0.68 J	0.92	0.18 U	NE	NE	NE
PFOA	335-67-1	1.50	2.30	2.30	2.00	0.23 J	6	4	5.1
PFNA	375-95-1	0.17 U	0.36 J	0.37 J	0.53 J	0.18 U	5.9	HI<1	NE
PFDA	335-76-2	0.17 U	0.30 J	1.40	0.91	0.18 U	NE	NE	NE
PFUnA	2058-94-8	0.17 U	0.18 U	0.18 U	0.18 U	0.18 U	NE	NE	NE
PFDOA	307-55-1	0.17 U	0.18 U	0.18 U	0.18 U	0.18 U	NE	NE	NE
PFTDA	72629-94-8	0.17 U	0.18 U	0.18 U	0.18 U	0.18 U	NE	NE	NE
PFTEDA	376-06-7	0.17 U	0.18 U	0.18 U	0.18 U	0.18 U	NE	NE	NE
PFBS	375-73-5	0.47 J	0.50 J	2.20	2.40	1.30	600	HI<1	500
PFPEs	630402-22-1	0.36 J	0.27 J	0.56 J	0.53 J	0.18 U	NE	NE	NE
PFHXS	355-46-4	1.30	1.20	1.40	1.40	0.54 J	39	HI<1	3
PFHPS	375-92-8	0.17 U	0.18 U	0.18 U	0.18 U	0.18 U	NE	NE	NE
PFOS	1763-23-1	2.00	2.00	6.60	5.90	0.83	4	4	6.5
PFNS	98789-57-2	0.35 U	0.36 U	0.36 U	0.35 U	0.36 U	NE	NE	NE
PFDS	335-77-3	0.17 U	0.18 U	0.18 U	0.18 U	0.18 U	NE	NE	NE
FTS 4:2	757124-72-4	0.35 U	0.53 U	0.36 U	0.35 U	0.36 U	NE	NE	NE
FTS 6:2	27619-97-2	0.17 UJ	0.18 UJ	0.18 UJ	0.18 UJ	0.18 U	NE	NE	NE
FTS 8:2	39108-34-4	0.52 UJ	0.53 UJ	0.54 UJ	0.53 UJ	0.54 UJ	NE	NE	NE
PFOSA	754-91-6	0.17 U	0.15 J	0.13 J	0.18 U	0.18 U	NE	NE	NE
N-MEFOSA	31506-32-8	1.70 UJ	1.80 UJ	1.80 UJ	1.80 UJ	1.80 U	NE	NE	NE
N-ETFOSA	4151-50-2	1.70 UJ	1.80 UJ	1.80 UJ	1.80 UJ	1.80 U	NE	NE	NE
N-MEFOSAA	2355-31-9	0.17 U	0.18 U	0.18 U	0.18 U	0.18 U	NE	NE	NE
N-ETFOSAA	2991-50-6	0.17 U	0.18 U	0.18 U	0.18 U	0.18 U	NE	NE	NE
N-MEFOSE	24448-09-7	1.00 U	1.10 UJ	1.10 U	1.10 UJ	1.10 U	NE	NE	NE
N-ETFOSE	1691-99-2	1.00 UJ	1.10 UJ	1.10 UJ	1.10 UJ	1.10 UJ	NE	NE	NE
HFPO-DA	13252-13-6	0.87 U	0.89 U	0.90 U	0.88 U	0.89 U	6	HI<1	NE
ADONA	919005-14-4	0.52 U	0.53 U	0.54 U	0.53 U	0.54 U	NE	NE	NE
9-CI-PF3ONS	756426-58-1	0.52 U	0.53 U	0.54 U	0.53 U	0.54 U	NE	NE	NE
11-CI-PF3OUdS	763051-92-9	0.52 U	0.53 U	0.54 U	0.53 U	0.54 U	NE	NE	NE

Notes

¹USEPA Regional Screening Levels (May 2023): <https://www.epa.gov/risk/regional-screening-levels-rsls-generic-tables> (TR=1E-06, THQ=0.1)

²USEPA proposed National Primary Drinking Water Regulation for PFAS: <https://www.epa.gov/sdwa/and-polyfluoroalkyl-substances-pfas>

³SWRCB DDW Notification Levels: https://www.waterboards.ca.gov/drinking_water/cert/cdrinkingwater/pfas.html

ng/L = nanogram per liter

DUP = Field Duplicate

J = Analyte concentration is an estimated value

NE = not established

Laboratory Results for PFAS (Groundwater)
(All concentrations reported in ng/L)
(Shaded values exceed screening level)

Analyte	CAS Number	MW-24-S5-112922	MW-24-S4-112922	MW-24-S3-112922	MW-24-S2-112922	DUP-2-112922 (MW-24-S2)	USEPA Tap Water RSLs ¹ (May 2023)	USEPA Proposed NPDWR ²	SWRCB DDW NL ³
PFBA	375-22-4	0.18 U	0.17 U	0.68 J	1.40 J	1.30 J	1,800	NE	NE
PFPEA	2706-90-3	0.18 U	0.17 U	1.60	2.30	2.40	NE	NE	NE
PFHXA	307-24-4	0.18 U	0.17 U	1.30	1.50	1.30	990	NE	NE
PFHPA	375-85-9	0.18 U	0.17 U	0.60 J	0.70	0.70	NE	NE	NE
PFOA	335-67-1	0.21 J	0.26 J	2.30	0.68 J	0.83 J	6	4	5.1
PFNA	375-95-1	0.18 U	0.17 U	0.31 J	0.17 U	0.17 U	5.9	HI<1	NE
PFDA	335-76-2	0.18 U	0.17 U	0.37 J	0.17 U	0.17 U	NE	NE	NE
PFUnA	2058-94-8	0.18 U	0.17 U	0.17 U	0.17 U	0.17 U	NE	NE	NE
PFDOA	307-55-1	0.18 U	0.17 U	0.17 U	0.17 U	0.17 U	NE	NE	NE
PFTRDA	72629-94-8	0.18 U	0.17 U	0.17 U	0.17 U	0.17 U	NE	NE	NE
PFTEDA	376-06-7	0.18 U	0.17 U	0.17 U	0.17 U	0.17 U	NE	NE	NE
PFBS	375-73-5	0.18 U	0.17 U	0.36 J	0.84	0.65 J	600	HI<1	500
PFPEs	630402-22-1	0.18 U	0.17 U	0.23 J	0.62 J	0.66 J	NE	NE	NE
PFHXS	355-46-4	0.18 U	0.17 U	0.82	2.30	2.20	39	HI<1	3
PFHPS	375-92-8	0.18 U	0.17 U	0.17 U	0.17 U	0.17 U	NE	NE	NE
PFOS	1763-23-1	0.18 U	0.17 U	0.70	0.33 J	0.55 J	4	4	6.5
PFNS	98789-57-2	0.35 U	0.34 U	0.34 U	0.34 U	0.34 U	NE	NE	NE
PFDS	335-77-3	0.18 U	0.17 U	0.17 U	0.17 U	0.17 U	NE	NE	NE
FTS 4:2	757124-72-4	0.35 U	0.34 U	0.34 U	0.34 U	0.34 U	NE	NE	NE
FTS 6:2	27619-97-2	0.18 UJ	0.17 UJ	0.17 UJ	0.17 UJ	0.17 UJ	NE	NE	NE
FTS 8:2	39108-34-4	0.53 UJ	0.52 UJ	0.51 UJ	0.51 UJ	0.50 UJ	NE	NE	NE
PFOSA	754-91-6	0.18 J	0.14 J	0.20 J	0.17 U	0.17 U	NE	NE	NE
N-MEFOSA	31506-32-8	1.80 UJ	1.70 UJ	1.70 U	1.70 UJ	1.70 UJ	NE	NE	NE
N-ETFOSA	4151-50-2	1.80 UJ	1.70 UJ	1.70 U	1.70 UJ	1.70 UJ	NE	NE	NE
N-MEFOSAA	2355-31-9	0.18 U	0.17 U	0.17 U	0.17 U	0.17 U	NE	NE	NE
N-ETFOSAA	2991-50-6	0.18 U	0.17 U	0.17 U	0.17 U	0.17 U	NE	NE	NE
N-MEFOSE	24448-09-7	1.10 UJ	1.00 UJ	1.00 U	1.00 UJ	1.00 U	NE	NE	NE
N-ETFOSE	1691-99-2	1.10 UJ	1.00 UJ	1.00 UJ	1.00 UJ	1.00 UJ	NE	NE	NE
HFPO-DA	13252-13-6	0.88 U	0.86 U	0.85 U	0.85 U	0.84 U	6	HI<1	NE
ADONA	919005-14-4	0.53 U	0.52 U	0.51 U	0.51 U	0.50 U	NE	NE	NE
9-Cl-PF3ONS	756426-58-1	0.53 U	0.52 U	0.51 U	0.51 U	0.50 U	NE	NE	NE
11-Cl-PF3OUdS	763051-92-9	0.53 U	0.52 U	0.51 U	0.51 U	0.50 U	NE	NE	NE

Notes

¹USEPA Regional Screening Levels (May 2023): <https://www.epa.gov/risk/regional-screening-levels-rsls-generic-tables> (TR=1E-06, THQ=0.1)

²USEPA proposed National Primary Drinking Water Regulation for PFAS: <https://www.epa.gov/sdwa/and-polyfluoroalkyl-substances-pfas>

³SWRCB DDW Notification Levels: https://www.waterboards.ca.gov/drinking_water/certlic/drinkingwater/pfas.html

ng/L = nanogram per liter

DUP = Field Duplicate

J = Analyte concentration is an estimated value

NE = not established

Laboratory Results for PFAS (Groundwater)

(All concentrations reported in ng/L)

(Shaded values exceed screening level)

Analyte	CAS Number	SB-1-112822	SB-2-112922	SB-3-113022	USEPA Tap Water RSLs ¹ (May 2023)	USEPA Proposed NPDWR ²	SWRCB DDW NL ³
PFBA	375-22-4	0.18 U	0.18 U	0.17 U	1,800	NE	NE
PFPEA	2706-90-3	0.18 U	0.18 U	0.17 U	NE	NE	NE
PFHXA	307-24-4	0.18 U	0.18 U	0.17 U	990	NE	NE
PFHPA	375-85-9	0.18 U	0.18 U	0.17 U	NE	NE	NE
PFOA	335-67-1	0.17 J	0.19 J	0.17 U	6	4	5.1
PFNA	375-95-1	0.18 U	0.18 U	0.17 U	5.9	HI<1	NE
PFDA	335-76-2	0.18 U	0.18 U	0.17 U	NE	NE	NE
PFUnA	2058-94-8	0.18 U	0.18 U	0.17 U	NE	NE	NE
PFDOA	307-55-1	0.18 U	0.18 U	0.17 U	NE	NE	NE
PFTRDA	72629-94-8	0.18 U	0.18 U	0.17 U	NE	NE	NE
PFTEDA	376-06-7	0.18 UJ	0.18 UJ	0.17 UJ	NE	NE	NE
PFBS	375-73-5	0.18 U	0.18 U	0.17 U	600	HI<1	500
PFPEs	630402-22-1	0.18 U	0.18 U	0.17 U	NE	NE	NE
PFHXS	355-46-4	0.18 U	0.18 U	0.17 U	39	HI<1	3
PFHPS	375-92-8	0.18 U	0.18 U	0.17 U	NE	NE	NE
PFOS	1763-23-1	0.12 J	0.06 J	0.17 U	4	4	6.5
PFNS	98789-57-2	0.37 U	0.35 U	0.35 U	NE	NE	NE
PFDS	335-77-3	0.18 U	0.18 U	0.17 U	NE	NE	NE
FTS 4:2	757124-72-4	0.37 U	0.35 U	0.35 U	NE	NE	NE
FTS 6:2	27619-97-2	0.18 UJ	0.18 UJ	0.17 UJ	NE	NE	NE
FTS 8:2	39108-34-4	0.55 U	0.53 U	0.52 U	NE	NE	NE
PFOSA	754-91-6	0.18 U	0.18 U	0.17 U	NE	NE	NE
N-MEFOSA	31506-32-8	1.80 UJ	1.80 UJ	1.70 U	NE	NE	NE
N-ETFOSA	4151-50-2	1.80 UJ	1.80 U	1.70 U	NE	NE	NE
N-MEFOSAA	2355-31-9	0.18 U	0.18 U	0.17 U	NE	NE	NE
N-ETFOSAA	2991-50-6	0.18 U	0.18 U	0.17 U	NE	NE	NE
N-MEFOSE	24448-09-7	1.10 UJ	1.10 UJ	1.00 UJ	NE	NE	NE
N-ETFOSE	1691-99-2	1.10 U	1.10 UJ	1.00 U	NE	NE	NE
HFPO-DA	13252-13-6	0.92 U	0.88 U	0.86 U	6	HI<1	NE
ADONA	919005-14-4	0.55 U	0.53 U	0.52 U	NE	NE	NE
9-CI-PF3ONS	756426-58-1	0.55 U	0.53 U	0.52 U	NE	NE	NE
11-CI-PF3OUDS	763051-92-9	0.55 U	0.53 U	0.52 U	NE	NE	NE

Notes

¹USEPA Regional Screening Levels (May 2023): <https://www.epa.gov/risk/regional-screening-levels-rsls-generic-tables> (TR=1E-06, THQ=0.1)

²USEPA proposed National Primary Drinking Water Regulation for PFAS: <https://www.epa.gov/sdwa/and-polyfluoroalkyl-substances-pfas>

³SWRCB DDW Notification Levels: https://www.waterboards.ca.gov/drinking_water/certific/drinkingwater/pfas.html

ng/L = nanogram per liter

SB = Source Blank

J = Analyte concentration is an estimated value

NE = not established

Laboratory Results for PFAS (Groundwater)

(All concentrations reported in ng/L)

(Shaded values exceed screening level)

Analyte	CAS Number	FB-1-112822	FB-2-112922	FB-3-113022	USEPA Tap Water RSLs ¹ (May 2023)	USEPA Proposed NPDWR ²	SWRCB DDW NL ³
PFBA	375-22-4	0.97 U	1.00 U	1.00 U	1,800	NE	NE
PFPEA	2706-90-3	0.97 U	1.00 U	1.00 U	NE	NE	NE
PFHXA	307-24-4	0.97 U	1.00 U	1.00 U	990	NE	NE
PFHPA	375-85-9	0.97 U	1.00 U	1.00 U	NE	NE	NE
PFOA	335-67-1	0.97 U	1.00 U	1.00 U	6	4	5.1
PFNA	375-95-1	0.97 U	1.00 U	1.00 U	5.9	HI<1	NE
PFDA	335-76-2	0.97 UJ	1.00 UJ	1.00 UJ	NE	NE	NE
PFUnA	2058-94-8	0.97 U	1.00 U	1.00 U	NE	NE	NE
PFDOA	307-55-1	0.97 UJ	1.00 UJ	1.00 UJ	NE	NE	NE
PFTRDA	72629-94-8	0.97 U	1.00 U	1.00 U	NE	NE	NE
PFTEDA	376-06-7	0.97 U	1.00 U	1.00 U	NE	NE	NE
PFBS	375-73-5	0.97 U	1.00 U	1.00 U	600	HI<1	500
PFPEs	630402-22-1	0.97 U	1.00 U	1.00 U	NE	NE	NE
PFHXS	355-46-4	0.97 U	1.00 U	1.00 U	39	HI<1	3
PFHPS	375-92-8	0.97 U	1.00 U	1.00 U	NE	NE	NE
PFOS	1763-23-1	0.97 U	1.00 U	1.00 U	4	4	6.5
PFNS	98789-57-2	1.90 U	2.10 U	2.00 U	NE	NE	NE
PFDS	335-77-3	0.97 U	1.00 U	1.00 U	NE	NE	NE
FTS 4:2	757124-72-4	1.90 U	2.10 U	2.00 U	NE	NE	NE
FTS 6:2	27619-97-2	0.97 U	1.00 U	1.00 U	NE	NE	NE
FTS 8:2	39108-34-4	2.90 U	3.10 U	3.10 U	NE	NE	NE
PFOSA	754-91-6	0.97 U	1.00 U	1.00 U	NE	NE	NE
N-MEFOSA	31506-32-8	9.70 U	10.00 U	10.00 UJ	NE	NE	NE
N-ETFOSA	4151-50-2	9.70 U	10.00 U	10.00 UJ	NE	NE	NE
N-MEFOSAA	2355-31-9	0.97 U	1.00 U	1.00 U	NE	NE	NE
N-ETFOSAA	2991-50-6	0.97 U	1.00 U	1.00 U	NE	NE	NE
N-MEFOSE	24448-09-7	5.80 U	6.30 U	6.10 U	NE	NE	NE
N-ETFOSE	1691-99-2	5.80 U	6.30 U	6.10 U	NE	NE	NE
HFPO-DA	13252-13-6	4.90 UJ	5.20 UJ	5.10 UJ	6	HI<1	NE
ADONA	919005-14-4	2.90 U	3.10 U	3.10 U	NE	NE	NE
9-CI-PF3ONS	756426-58-1	2.90 U	3.10 U	3.10 U	NE	NE	NE
11-CI-PF3OUDS	763051-92-9	2.90 U	3.10 U	3.10 U	NE	NE	NE

Notes

¹USEPA Regional Screening Levels (May 2023): <https://www.epa.gov/risk/regional-screening-levels-rsls-generic-tables> (TR=1E-06, THQ=0.1)

²USEPA proposed National Primary Drinking Water Regulation for PFAS: <https://www.epa.gov/sdwa/and-polyfluoroalkyl-substances-pfas>

³SWRCB DDW Notification Levels: https://www.waterboards.ca.gov/drinking_water/certific/drinkingwater/pfas.html

ng/L = nanogram per liter

FB = Field Blank (provided by laboratory)

J = Analyte concentration is an estimated value

NE = not established

Laboratory Results for PFAS (Groundwater)

(All concentrations reported in ng/L)

(Shaded values exceed screening level)

Analyte	CAS Number	EQP-1-112822	EQP-2-112922	EQP-3-113022	USEPA Tap Water RSLs ¹ (May 2023)	USEPA Proposed NPDWR ²	SWRCB DDW NL ³
PFBA	375-22-4	0.18 U	0.18 U	0.18 U	1,800	NE	NE
PFPEA	2706-90-3	0.18 U	0.18 U	0.18 U	NE	NE	NE
PFHXA	307-24-4	0.18 U	0.18 U	0.18 U	990	NE	NE
PFHPA	375-85-9	0.18 U	0.18 U	0.18 U	NE	NE	NE
PFOA	335-67-1	0.23 J	0.18 U	0.21 J	6	4	5.1
PFNA	375-95-1	0.18 U	0.18 U	0.18 U	5.9	HI<1	NE
PFDA	335-76-2	0.18 U	0.18 U	0.18 U	NE	NE	NE
PFUnA	2058-94-8	0.18 UJ	0.18 UJ	0.18 UJ	NE	NE	NE
PFDOA	307-55-1	0.18 U	0.18 U	0.18 U	NE	NE	NE
PFTRDA	72629-94-8	0.18 U	0.18 U	0.18 U	NE	NE	NE
PFTEDA	376-06-7	0.18 U	0.18 U	0.18 U	NE	NE	NE
PFBS	375-73-5	0.18 U	0.18 U	0.18 U	600	HI<1	500
PFPEs	630402-22-1	0.18 U	0.18 U	0.18 U	NE	NE	NE
PFHXS	355-46-4	0.18 U	0.18 U	0.18 U	39	HI<1	3
PFHPS	375-92-8	0.18 U	0.18 U	0.18 U	NE	NE	NE
PFOS	1763-23-1	0.18 U	0.11 J	0.18 U	4	4	6.5
PFNS	98789-57-2	0.36 U	0.37 U	0.36 U	NE	NE	NE
PFDS	335-77-3	0.18 U	0.18 U	0.18 U	NE	NE	NE
FTS 4:2	757124-72-4	0.36 U	0.37 U	0.36 U	NE	NE	NE
FTS 6:2	27619-97-2	0.18 U	0.18 U	0.18 U	NE	NE	NE
FTS 8:2	39108-34-4	0.54 U	0.55 U	0.55 U	NE	NE	NE
PFOSA	754-91-6	0.18 U	0.18 U	0.18 U	NE	NE	NE
N-MEFOSA	31506-32-8	1.80 UJ	1.80 U	1.80 U	NE	NE	NE
N-ETFOSA	4151-50-2	1.80 UJ	1.80 U	1.80 U	NE	NE	NE
N-MEFOSAA	2355-31-9	0.18 U	0.18 U	0.18 U	NE	NE	NE
N-ETFOSAA	2991-50-6	0.18 U	0.18 U	0.18 U	NE	NE	NE
N-MEFOSE	24448-09-7	1.10 UJ	1.10 U	1.10 U	NE	NE	NE
N-ETFOSE	1691-99-2	1.10 UJ	1.10 U	1.10 U	NE	NE	NE
HFPO-DA	13252-13-6	0.90 U	0.92 U	0.91 U	6	HI<1	NE
ADONA	919005-14-4	0.54 U	0.55 U	0.55 U	NE	NE	NE
9-CI-PF3ONS	756426-58-1	0.54 U	0.55 U	0.55 U	NE	NE	NE
11-CI-PF3OUDS	763051-92-9	0.54 U	0.55 U	0.55 U	NE	NE	NE

Notes

¹USEPA Regional Screening Levels (May 2023): <https://www.epa.gov/risk/regional-screening-levels-rsls-generic-tables> (TR=1E-06, THQ=0.1)

²USEPA proposed National Primary Drinking Water Regulation for PFAS: <https://www.epa.gov/sdwa/and-polyfluoroalkyl-substances-pfas>

³SWRCB DDW Notification Levels: https://www.waterboards.ca.gov/drinking_water/certific/drinkingwater/pfas.html

ng/L = nanogram per liter

EQP = equipment blank (i.e., rinsate)

J = Analyte concentration is an estimated value

NE = not established

Laboratory Results for PFAS (Soil)
(All concentrations reported in ng/g)
(Shaded values exceed screening level)

Analyte	CAS Number	SB-1-0.5-113022	SB-1-2.0-113022	SB-2-0.5-113022	SB-2-2.0-113022	SB-3-0.5-113022	SB-3-2.0-113022	USEPA RSL for Residential Soil (May 2023) ¹
PFBA	375-22-4	0.20 J	0.57 J	0.78 J	5.40	0.10 U	7.10	7,800
PFPEA	2706-90-3	0.27 J	1.20	0.78 J	15.00	0.19 J	53.00	NE
PFHXA	307-24-4	0.13 J	0.52 J	0.57 J	10.00	0.10 U	32.00	3,200
PFHPA	375-85-9	0.12 J	0.58 J	3.40	13.00	0.10 U	10.00	NE
PFOA	335-67-1	0.52 J	2.20	3.50	10.00	0.40 J	4.60	19
PFNA	375-95-1	2.70	2.20	0.45 J	1.20	0.24 J	0.59 J	19
PFDA	335-76-2	0.54 J	0.67 J	0.17 UJ	0.35 J	0.22 J	0.15 UJ	NE
PFUnA	2058-94-8	0.12 UJ	0.10 UJ	0.11 UJ	0.11 UJ	0.10 UJ	0.10 UJ	NE
PFDOA	307-55-1	0.17 U	0.15 U	0.17 U	0.16 U	0.15 U	0.15 U	NE
PFTRDA	72629-94-8	0.12 U	0.10 U	0.11 U	0.11 U	0.10 U	0.10 U	NE
PFTEDA	376-06-7	0.23 U	0.20 U	0.22 U	0.22 U	0.21 U	0.20 U	NE
PFBS	375-73-5	0.12 U	0.10 U	0.11 U	0.11 U	0.10 U	0.13 J	1,900
PFPEs	630402-22-1	0.48 U	0.41 U	0.46 U	0.45 U	0.42 U	0.42 U	NE
PFHXS	355-46-4	0.17 U	0.15 U	0.17 U	0.16 U	0.15 U	0.15 U	130
PFHPS	375-92-8	0.17 UJ	0.15 UJ	0.17 UJ	0.16 UJ	0.15 UJ	0.15 UJ	NE
PFOS	1763-23-1	0.66 J	0.13 J	0.15 J	0.19 J	0.10 UJ	0.39 J	13
PFNS	68259-12-1	0.45 U	0.39 U	0.43 U	0.42 U	0.40 U	0.39 U	NE
PFDS	335-77-3	0.23 U	0.20 U	0.22 U	0.22 U	0.21 U	0.20 U	NE
FTS 4:2	757124-72-4	0.23 U	0.20 U	0.22 U	0.22 U	0.21 U	0.20 U	NE
FTS 6:2	27619-97-2	0.23 U	0.93 J	0.36 J	0.29 J	0.24 J	32.00	NE
FTS 8:2	39108-34-4	0.28 J	0.80 J	0.30 J	0.16 UJ	0.48 J	27.00 J	NE
PFOSA	754-91-6	0.12 U	0.10 U	0.11 U	0.11 U	0.10 U	0.10 U	NE
N-MEFOSA	31506-32-8	0.57 UJ	0.49 U	0.54 U	0.53 UJ	0.51 U	0.50 U	NE
N-ETFOSA	4151-50-2	0.57 UJ	0.49 U	0.54 U	0.53 U	0.50 U	0.50 U	NE
N-MEFOSAA	2355-31-9	0.23 U	0.20 U	0.22 U	0.22 U	0.21 U	0.20 U	NE
N-ETFOSAA	2991-50-6	0.23 U	0.20 U	0.22 U	0.22 U	0.21 U	0.20 U	NE
N-MEFOSE	24448-09-7	0.47 UJ	0.41 U	0.45 U	0.44 UJ	0.42 U	0.41 U	NE
N-ETFOSE	1691-99-2	0.36 U	0.31 U	0.34 U	0.33 UJ	0.32 U	0.31 U	NE
HFPO-DA	13252-13-6	0.23 U	0.20 U	0.22 U	0.22 U	0.21 U	0.20 U	23
ADONA	919005-14-4	0.23 U	0.20 U	0.22 U	0.22 U	0.21 U	0.20 U	NE
9-Cl-PF3ONS	756426-58-1	0.23 U	0.20 U	0.22 U	0.22 U	0.21 U	0.20 U	NE
11-Cl-PF3OUdS	763051-92-9	0.23 U	0.20 U	0.22 U	0.22 U	0.21 U	0.20 U	NE

Notes

¹USEPA Regional Screening Levels (May 2023): <https://www.epa.gov/risk/regional-screening-levels-rsls-generic-tables> (TR=1E-06, THQ=0.1)

ng/g = nanogram per gram

SB = Soil Boring

DUP = Field Duplicate

J = Analyte concentration is an estimated value

NE = not established

Laboratory Results for PFAS (Soil)
(All concentrations reported in ng/g)
(Shaded values exceed screening level)

Analyte	CAS Number	SB-4-0.5-113022	SB-4-2.0-113022	SB-5-0.5-113022	SB-5-2.0-113022	DUP-1-113022 (SB-5-2.0)	SB-6-0.5-113022	DUP-2-113022 (SB-6-0.5)	SB-6-2.0-113022	USEPA RSL for Residential Soil (May 2023) ¹
PFBA	375-22-4	0.10 U	0.10 U	0.10 U	0.09 U	0.10 U	0.12 U	0.12 U	0.10 U	7,800
PFPEA	2706-90-3	0.15 U	0.15 U	0.15 U	0.14 U	0.15 U	0.19 U	0.18 U	0.15 U	NE
PFHXA	307-24-4	0.10 U	0.10 U	0.10 U	0.09 U	0.10 U	0.12 U	0.12 U	0.24 J	3,200
PFHPA	375-85-9	0.10 U	0.10 U	0.10 U	0.09 U	0.10 U	0.12 U	0.12 U	0.10 J	NE
PFOA	335-67-1	0.15 U	0.15 U	0.15 U	0.14 U	0.15 U	0.19 U	0.28 J	0.16 J	19
PFNA	375-95-1	0.10 U	0.10 U	0.10 U	0.09 U	0.10 U	0.12 U	0.19 J	0.10 U	19
PFDA	335-76-2	0.18 J	0.15 UJ	0.15 UJ	0.14 UJ	0.15 UJ	0.27 J	0.38 J	0.15 UJ	NE
PFUnA	2058-94-8	0.10 UJ	0.10 UJ	0.10 UJ	0.09 UJ	0.10 UJ	0.17 J	0.25 J	0.10 UJ	NE
PFDOA	307-55-1	0.15 U	0.15 U	0.15 U	0.14 U	0.15 U	0.20 J	0.18 U	0.15 U	NE
PFRDA	72629-94-8	0.10 U	0.10 U	0.10 U	0.09 U	0.10 U	0.12 J	0.12 U	0.10 U	NE
PFTEDA	376-06-7	0.20 U	0.20 U	0.19 U	0.18 U	0.20 U	0.25 U	0.24 U	0.20 U	NE
PFBS	375-73-5	0.10 U	0.10 U	0.10 U	0.09 U	0.10 U	0.12 U	0.12 U	0.10 U	1,900
PFPEs	630402-22-1	0.41 U	0.42 U	0.40 U	0.37 U	0.41 U	0.51 U	0.49 U	0.41 U	NE
PFHXS	355-46-4	0.15 U	0.15 U	0.15 U	0.14 U	0.15 U	0.90 J	1.50	2.40	130
PFHPS	375-92-8	0.15 UJ	0.15 UJ	0.15 UJ	0.14 UJ	0.15 UJ	0.19 UJ	0.18 UJ	0.15 UJ	NE
PFOS	1763-23-1	1.80 J	0.13 J	1.70 J	0.09 UJ	0.10 UJ	22.00 J	48.00 J	1.50 J	13
PFNS	68259-12-1	0.38 U	0.40 U	0.38 U	0.35 U	0.39 U	2.00	5.30	0.20 U	NE
PFDS	335-77-3	0.20 U	0.20 U	0.19 U	0.18 U	0.20 U	1.50 J	2.50	0.20 U	NE
FTS 4:2	757124-72-4	0.20 U	0.20 U	0.19 U	0.18 U	0.20 U	0.25 U	0.24 U	0.20 U	NE
FTS 6:2	27619-97-2	0.20 U	0.20 U	0.19 U	0.18 U	0.20 U	0.25 U	0.24 U	0.15 U	NE
FTS 8:2	39108-34-4	0.15 UJ	0.15 UJ	0.15 UJ	0.14 UJ	0.15 UJ	0.19 UJ	0.18 UJ	0.10 UJ	NE
PFOSA	754-91-6	0.10 U	0.10 U	0.10 U	0.09 U	0.10 U	0.12 U	0.15 J	0.49 U	NE
N-MEFOSA	31506-32-8	0.48 U	0.50 U	0.48 U	0.45 U	0.49 U	0.61 UJ	0.58 UJ	0.49 U	NE
N-ETFOSA	4151-50-2	0.48 U	0.50 U	0.48 U	0.44 U	0.49 U	0.61 UJ	0.58 UJ	0.20 U	NE
N-MEFOSAA	2355-31-9	0.20 U	0.20 U	0.19 U	0.18 U	0.20 U	0.25 U	0.24 U	0.20 U	NE
N-ETFOSAA	2991-50-6	0.20 U	0.20 U	0.19 U	0.18 U	0.20 U	0.25 U	0.24 U	0.41 U	NE
N-MEFOSE	24448-09-7	0.40 U	0.42 U	0.39 U	0.37 U	0.41 U	0.50 UJ	0.48 UJ	0.31 U	NE
N-ETFOSE	1691-99-2	0.30 U	0.32 U	0.30 U	0.28 U	0.31 U	0.38 U	0.37 UJ	0.20 U	NE
HFPO-DA	13252-13-6	0.20 U	0.20 U	0.19 U	0.18 U	0.20 U	0.25 U	0.24 U	0.20 U	23
ADONA	919005-14-4	0.20 U	0.20 U	0.19 U	0.18 U	0.20 U	0.25 U	0.24 U	0.20 U	NE
9-CI-PF3ONS	756426-58-1	0.20 U	0.20 U	0.19 U	0.18 U	0.20 U	0.25 U	0.24 U	0.20 U	NE
11-CI-PF3OUdS	763051-92-9	0.20 U	0.20 U	0.19 U	0.18 U	0.20 U	0.25 U	0.24 U	0.25	NE

Notes

¹USEPA Regional Screening Levels (May 2023): <https://www.epa.gov/risk/regional-screening-levels-rsls-generic-tables> (TR=1E-06, THQ=0.1)

ng/g = nanogram per gram

SB = Soil Boring

DUP = Field Duplicate

J = Analyte concentration is an estimated value

NE = not established

Laboratory Results for PFAS (Soil QA/QC)
(All concentrations reported in ng/L)
(Shaded values exceed screening level)

Analyte	CAS Number	EQP-1-SOIL	Field Blank	USEPA Tap Water RSLs ¹ (May 2023)	USEPA Proposed NPDWR ²	SWRCB DDW NL ³
PFBA	375-22-4	0.04 U	0.26 U	7,800	NE	NE
PFPEA	2706-90-3	0.05 U	0.33 U	NE	NE	NE
PFHXA	307-24-4	0.05 U	0.34 U	3,200	NE	NE
PFHPA	375-85-9	0.04 U	0.26 U	NE	NE	NE
PFOA	335-67-1	0.07 U	0.43 U	6	4	5.1
PFNA	375-95-1	0.04 U	0.26 U	5.9	HI<1	NE
PFDA	335-76-2	0.04 U	0.26 UJ	NE	NE	NE
PFUnA	2058-94-8	0.06 U	0.42 U	NE	NE	NE
PFDOA	307-55-1	0.04 U	0.26 UJ	NE	NE	NE
PFTRDA	72629-94-8	0.05 U	0.31 U	NE	NE	NE
PFTEDA	376-06-7	0.07 UJ	0.45 U	NE	NE	NE
PFBS	375-73-5	0.04 U	0.26 U	600	HI<1	500
PFPEs	630402-22-1	0.05 U	0.31 U	NE	NE	NE
PFHXS	355-46-4	0.04 U	0.26 U	39	HI<1	3
PFHPS	375-92-8	0.05 U	0.30 U	NE	NE	NE
PFOS	1763-23-1	0.04 U	0.26 U	4	4	6.5
PFNS	68259-12-1	0.20 U	1.30 U	NE	NE	NE
PFDS	335-77-3	0.05 U	0.34 U	NE	NE	NE
FTS 4:2	757124-72-4	0.09 U	0.57 U	NE	NE	NE
FTS 6:2	27619-97-2	0.07 U	0.48 U	NE	NE	NE
FTS 8:2	39108-34-4	0.16 U	1.10 U	NE	NE	NE
PFOSA	754-91-6	0.04 U	0.26 U	NE	NE	NE
N-MEFOSA	31506-32-8	0.79 U	5.20 U	NE	NE	NE
N-ETFOSA	4151-50-2	0.79 UJ	5.20 U	NE	NE	NE
N-MEFOSAA	2355-31-9	0.06 U	0.38 U	NE	NE	NE
N-ETFOSAA	2991-50-6	0.04 U	0.26 U	NE	NE	NE
N-MEFOSE	24448-09-7	0.48 UJ	3.20 U	NE	NE	NE
N-ETFOSE	1691-99-2	0.48 U	3.20 U	NE	NE	NE
HFPO-DA	13252-13-6	0.39 U	2.60 UJ	6	HI<1	NE
ADONA	919005-14-4	0.21 U	1.40 U	NE	NE	NE
9-Cl-PF3ONS	756426-58-1	0.19 U	1.20 U	NE	NE	NE
11-Cl-PF3OUdS	763051-92-9	0.19 U	1.30 U	NE	NE	NE

Notes

¹USEPA Regional Screening Levels (May 2023): <https://www.epa.gov/risk/regional-screening-levels-rsls-generic-tables> (TR=1E-06, THQ=0.1)

²USEPA proposed National Primary Drinking Water Regulation for PFAS: <https://www.epa.gov/sdwa/and-polyfluoroalkyl-substances-pfas>

³SWRCB DDW Notification Levels: https://www.waterboards.ca.gov/drinking_water/certlic/drinkingwater/pfas.html

ng/L = nanogram per liter

EQP = equipment blank (i.e., rinsate)

J = Analyte concentration is an estimated value

NE = not established

RPD Analysis - Groundwater (ng/L)

Parameter	CAS Number	MW-4-S5-112822		DUP-1-112822 (MW-4-S5)		RPD %
PFBA	375-22-4	0.36	J	0.61	J	-51.55%
PFPEA	2706-90-3	0.72	J	1.00	J	-32.56%
PFHXA	307-24-4	0.48	J	0.97		-67.59%
PFHPA	375-85-9	0.28	J	0.41	J	-37.68%
PFOA	335-67-1	0.27	J	0.94	J	-110.74%
PFNA	375-95-1	0.19	U	0.18	U	5.41%
PFDA	335-76-2	0.19	U	0.17	J	11.11%
PFUnA	2058-94-8	0.19	U	0.18	U	5.41%
PFDOA	307-55-1	0.19	U	0.18	U	5.41%
PFTRDA	72629-94-8	0.19	U	0.18	U	5.41%
PFTEDA	376-06-7	0.19	U	0.18	U	5.41%
PFBS	375-73-5	0.79		4.90		-144.46%
PFPEs	630402-22-1	0.40	J	0.29	J	31.88%
PFHXS	355-46-4	0.42	J	0.44	J	-4.65%
PFHPS	375-92-8	0.19	U	0.18	U	5.41%
PFOS	1763-23-1	0.14	J	0.18	U	-25.00%
PFNS	98789-57-2	0.37	U	0.35	U	5.56%
PFDS	335-77-3	0.19	U	0.18	U	5.41%
FTS 4:2	757124-72-4	0.37	U	0.35	U	5.56%
FTS 6:2	27619-97-2	0.19	UJ	0.18	UJ	5.41%
FTS 8:2	39108-34-4	0.56	UJ	0.53	UJ	5.50%
PFOSA	754-91-6	0.19	U	0.18	U	5.41%
N-MEFOSA	31506-32-8	1.90	UJ	1.80	UJ	5.41%
N-ETFOSA	4151-50-2	1.90	UJ	1.80	UJ	5.41%
N-MEFOSAA	2355-31-9	0.19	U	0.18	U	5.41%
N-ETFOSAA	2991-50-6	0.19	U	0.21	J	-10.00%
N-MEFOSE	24448-09-7	1.10	UJ	1.10	UJ	0.00%
N-ETFOSE	1691-99-2	1.10	UJ	1.10	UJ	0.00%
HFPO-DA	13252-13-6	0.93	U	0.88	U	5.52%
ADONA	919005-14-4	0.56	U	0.53	U	5.50%
9-Cl-PF3ONS	756426-58-1	0.56	U	0.53	U	5.50%
11-Cl-PF3OUds	763051-92-9	0.56	U	0.53	U	5.50%

Precision for Field Duplicates (RPD)

≤ 30%

RPD Analysis - Groundwater (ng/L)

Parameter	CAS Number	MW-24-S2-112922		DUP-2-112922 (MW-24-S2)		RPD %
PFBA	375-22-4	1.40	J	1.30	J	7.41%
PFPEA	2706-90-3	2.30		2.40		-4.26%
PFHXA	307-24-4	1.50		1.30		14.29%
PFHPA	375-85-9	0.70		0.70		0.00%
PFOA	335-67-1	0.68	J	0.83	J	-19.87%
PFNA	375-95-1	0.17	U	0.17	U	0.00%
PFDA	335-76-2	0.17	U	0.17	U	0.00%
PFUnA	2058-94-8	0.17	U	0.17	U	0.00%
PFDOA	307-55-1	0.17	U	0.17	U	0.00%
PFTRDA	72629-94-8	0.17	U	0.17	U	0.00%
PFTEDA	376-06-7	0.17	U	0.17	U	0.00%
PFBS	375-73-5	0.84		0.65	J	25.50%
PFPEs	630402-22-1	0.62	J	0.66	J	-6.25%
PFHXS	355-46-4	2.30		2.20		4.44%
PFHPS	375-92-8	0.17	U	0.17	U	0.00%
PFOS	1763-23-1	0.33	J	0.55	J	-50.00%
PFNS	98789-57-2	0.34	U	0.34	U	0.00%
PFDS	335-77-3	0.17	U	0.17	U	0.00%
FTS 4:2	757124-72-4	0.34	U	0.34	U	0.00%
FTS 6:2	27619-97-2	0.17	UJ	0.17	UJ	0.00%
FTS 8:2	39108-34-4	0.51	UJ	0.50	UJ	1.98%
PFOSA	754-91-6	0.17	U	0.17	U	0.00%
N-MEFOSA	31506-32-8	1.70	UJ	1.70	UJ	0.00%
N-ETFOSA	4151-50-2	1.70	UJ	1.70	UJ	0.00%
N-MEFOSAA	2355-31-9	0.17	U	0.17	U	0.00%
N-ETFOSAA	2991-50-6	0.17	U	0.17	U	0.00%
N-MEFOSE	24448-09-7	1.00	UJ	1.00	U	0.00%
N-ETFOSE	1691-99-2	1.00	UJ	1.00	UJ	0.00%
HFPO-DA	13252-13-6	0.85	U	0.84	U	1.18%
ADONA	919005-14-4	0.51	U	0.50	U	1.98%
9-CI-PF3ONS	756426-58-1	0.51	U	0.50	U	1.98%
11-CI-PF3OUdS	763051-92-9	0.51	U	0.50	U	1.98%

Precision for Field Duplicates (RPD)

≤ 30%

RPD Analysis - Groundwater (ng/L)

Parameter	CAS Number	MW-17-S3-112922		DUP-3-112922 (MW-17-S3)		RPD %
PFBA	375-22-4	1.00	J	0.80	J	22.22%
PFPEA	2706-90-3	1.80		1.90		-5.41%
PFHXA	307-24-4	1.20		1.40	J	-15.38%
PFHPA	375-85-9	0.68	J	0.92		-30.00%
PFOA	335-67-1	2.30		2.00		13.95%
PFNA	375-95-1	0.37	J	0.53	J	-35.56%
PFDA	335-76-2	1.40		0.91		42.42%
PFUnA	2058-94-8	0.18	U	0.18	U	0.00%
PFDOA	307-55-1	0.18	U	0.18	U	0.00%
PFTRDA	72629-94-8	0.18	U	0.18	U	0.00%
PFTEDA	376-06-7	0.18	U	0.18	U	0.00%
PFBS	375-73-5	2.20		2.40		-8.70%
PFPEs	630402-22-1	0.56	J	0.53	J	5.50%
PFHXS	355-46-4	1.40		1.40		0.00%
PFHPS	375-92-8	0.18	U	0.18	U	0.00%
PFOS	1763-23-1	6.60		5.90		11.20%
PFNS	98789-57-2	0.36	U	0.35	U	2.82%
PFDS	335-77-3	0.18	U	0.18	U	0.00%
FTS 4:2	757124-72-4	0.36	U	0.35	U	2.82%
FTS 6:2	27619-97-2	0.18	UJ	0.18	UJ	0.00%
FTS 8:2	39108-34-4	0.54	UJ	0.53	UJ	1.87%
PFOSA	754-91-6	0.13	J	0.18	U	-32.26%
N-MEFOSA	31506-32-8	1.80	UJ	1.80	UJ	0.00%
N-ETFOSA	4151-50-2	1.80	UJ	1.80	UJ	0.00%
N-MEFOSAA	2355-31-9	0.18	U	0.18	U	0.00%
N-ETFOSAA	2991-50-6	0.18	U	0.18	U	0.00%
N-MEFOSE	24448-09-7	1.10	U	1.10	UJ	0.00%
N-ETFOSE	1691-99-2	1.10	UJ	1.10	UJ	0.00%
HFPO-DA	13252-13-6	0.90	U	0.88	U	2.25%
ADONA	919005-14-4	0.54	U	0.53	U	1.87%
9-CI-PF3ONS	756426-58-1	0.54	U	0.53	U	1.87%
11-CI-PF3OUdS	763051-92-9	0.54	U	0.53	U	1.87%

Precision for Field Duplicates (RPD)

≤ 30%

RPD Analysis - Soil (ng/g)

Parameter	CAS Number	SB-5-2.0-113022	DUP-1-113022 (SB-5-2.0)	RPD %
PFBA	375-22-4	0.09 U	0.10 U	-10.53%
PFPEA	2706-90-3	0.14 U	0.15 U	-6.90%
PFHXA	307-24-4	0.09 U	0.10 U	-10.53%
PFHPA	375-85-9	0.09 U	0.10 U	-10.53%
PFOA	335-67-1	0.14 U	0.15 U	-6.90%
PFNA	375-95-1	0.09 U	0.10 U	-10.53%
PFDA	335-76-2	0.14 UJ	0.15 UJ	-6.90%
PFUnA	2058-94-8	0.09 UJ	0.10 UJ	-10.53%
PFDOA	307-55-1	0.14 U	0.15 U	-6.90%
PFTRDA	72629-94-8	0.09 U	0.10 U	-10.53%
PFTEDA	376-06-7	0.18 U	0.20 U	-10.53%
PFBS	375-73-5	0.09 U	0.10 U	-10.53%
PFPEs	630402-22-1	0.37 U	0.41 U	-10.26%
PFHXS	355-46-4	0.14 U	0.15 U	-6.90%
PFHPS	375-92-8	0.14 UJ	0.15 UJ	-6.90%
PFOS	1763-23-1	0.09 UJ	0.10 UJ	-10.53%
PFNS	98789-57-2	0.35 U	0.39 U	-10.81%
PFDS	335-77-3	0.18 U	0.20 U	-10.53%
FTS 4:2	757124-72-4	0.18 U	0.20 U	-10.53%
FTS 6:2	27619-97-2	0.18 U	0.20 U	-10.53%
FTS 8:2	39108-34-4	0.14 UJ	0.15 UJ	-6.90%
PFOSA	754-91-6	0.09 U	0.10 U	-10.53%
N-MEFOSA	31506-32-8	0.45 U	0.49 U	-8.51%
N-ETFOSA	4151-50-2	0.44 U	0.49 U	-10.75%
N-MEFOSAA	2355-31-9	0.18 U	0.20 U	-10.53%
N-ETFOSAA	2991-50-6	0.18 U	0.20 U	-10.53%
N-MEFOSE	24448-09-7	0.37 U	0.41 U	-10.26%
N-ETFOSE	1691-99-2	0.28 U	0.31 U	-10.17%
HFPO-DA	13252-13-6	0.18 U	0.20 U	-10.53%
ADONA	919005-14-4	0.18 U	0.20 U	-10.53%
9-CI-PF3ONS	756426-58-1	0.18 U	0.20 U	-10.53%
11-CI-PF3OUdS	763051-92-9	0.18 U	0.20 U	-10.53%

Precision for Field Duplicates (RPD)

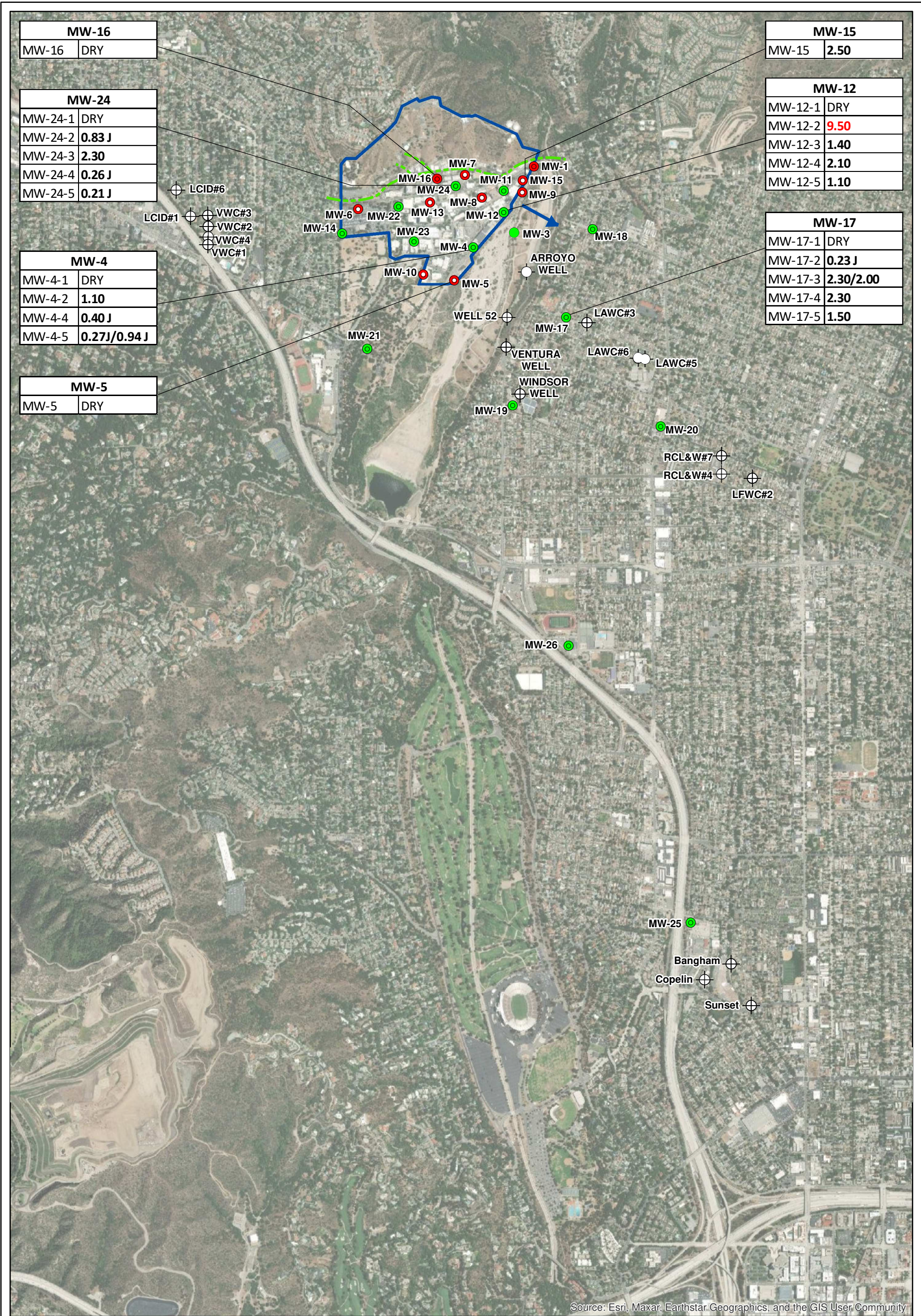
≤ 25%

RPD Analysis - Soil (ng/g)

Parameter	CAS Number	SB-6-0.5-113022	DUP-2-113022 (SB-6-0.5)	RPD %
PFBA	375-22-4	0.12 U	0.12 U	0.00%
PFPEA	2706-90-3	0.19 U	0.18 U	5.41%
PFHXA	307-24-4	0.12 U	0.12 U	0.00%
PFHPA	375-85-9	0.12 U	0.12 U	0.00%
PFOA	335-67-1	0.19 U	0.28 J	-38.30%
PFNA	375-95-1	0.12 U	0.19 J	-45.16%
PFDA	335-76-2	0.27 J	0.38 J	-33.85%
PFUnA	2058-94-8	0.17 J	0.25 J	-38.10%
PFDOA	307-55-1	0.20 J	0.18 U	10.53%
PFTRDA	72629-94-8	0.12 J	0.12 U	0.00%
PFTEDA	376-06-7	0.25 U	0.24 U	4.08%
PFBS	375-73-5	0.12 U	0.12 U	0.00%
PFPEs	630402-22-1	0.51 U	0.49 U	4.00%
PFHXS	355-46-4	0.90 J	1.50	-50.00%
PFHPS	375-92-8	0.19 UJ	0.18 UJ	5.41%
PFOS	1763-23-1	22.00 J	48.00 J	-74.29%
PFNS	98789-57-2	2.00	5.30	-90.41%
PFDS	335-77-3	1.50 J	2.50	-50.00%
FTS 4:2	757124-72-4	0.25 U	0.24 U	4.08%
FTS 6:2	27619-97-2	0.25 U	0.24 U	4.08%
FTS 8:2	39108-34-4	0.19 UJ	0.18 UJ	5.41%
PFOSA	754-91-6	0.12 U	0.15 J	-22.22%
N-MEFOSA	31506-32-8	0.61 UJ	0.58 UJ	5.04%
N-ETFOSA	4151-50-2	0.61 UJ	0.58 UJ	5.04%
N-MEFOSAA	2355-31-9	0.25 U	0.24 U	4.08%
N-ETFOSAA	2991-50-6	0.25 U	0.24 U	4.08%
N-MEFOSE	24448-09-7	0.50 UJ	0.48 UJ	4.08%
N-ETFOSE	1691-99-2	0.38 U	0.37 UJ	2.67%
HFPO-DA	13252-13-6	0.25 U	0.24 U	4.08%
ADONA	919005-14-4	0.25 U	0.24 U	4.08%
9-CI-PF3ONS	756426-58-1	0.25 U	0.24 U	4.08%
11-CI-PF3OUdS	763051-92-9	0.25 U	0.24 U	4.08%

Precision for Field Duplicates (RPD)

≤ 25%



MW-16	
MW-16	DRY

MW-15	
MW-15	2.50

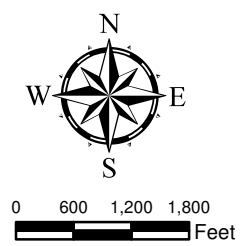
MW-24	
MW-24-1	DRY
MW-24-2	0.83 J
MW-24-3	2.30
MW-24-4	0.26 J
MW-24-5	0.21 J

MW-12	
MW-12-1	DRY
MW-12-2	9.50
MW-12-3	1.40
MW-12-4	2.10
MW-12-5	1.10

MW-4	
MW-4-1	DRY
MW-4-2	1.10
MW-4-4	0.40 J
MW-4-5	0.27J/0.94 J

MW-17	
MW-17-1	DRY
MW-17-2	0.23 J
MW-17-3	2.30/2.00
MW-17-4	2.30
MW-17-5	1.50

MW-5	
MW-5	DRY



- Legend**
- Deep Multi-Port Monitoring Well
 - Shallow Monitoring Well Location
 - ⊕ Municipal Production Well
 - ▭ JPL Facility Boundary
 - Approximate Location of Thrust Fault
 - Groundwater Flow Direction

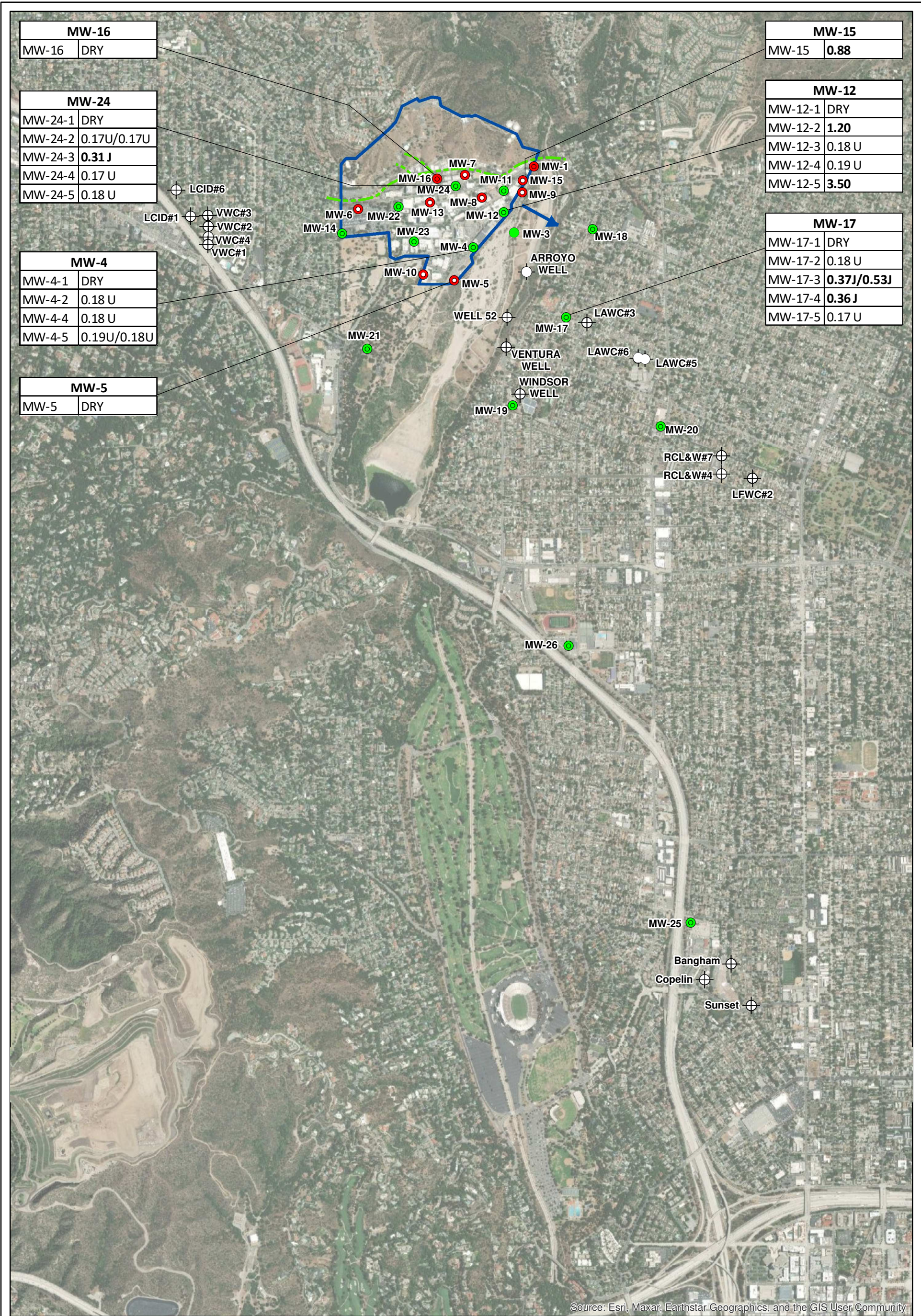
MW-8
 1) 0.5 U
 Well ID
 Screen number
 Concentration in nanograms per liter
 J = Detected estimated value
 U = Not detected
 NA = Not Analyzed
 Bold font indicates detected concentration below the screening level;
 Red font indicates concentration exceeds screening level.

Source: Esri, Maxar, Earthstar Geographics, and the GIS User Community



PFOA - Perfluorooctanoic Acid

DESIGNED BY JHG	JPL - Pasadena, CA	Figure A-1
DRAWN BY JHG		
CHECKED BY DC	Contract No: W912PL21D0021	April 2023



MW-16	
MW-16	DRY

MW-15	
MW-15	0.88

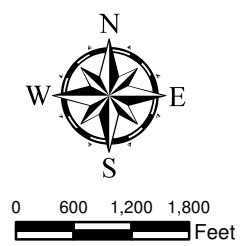
MW-24	
MW-24-1	DRY
MW-24-2	0.17U/0.17U
MW-24-3	0.31 J
MW-24-4	0.17 U
MW-24-5	0.18 U

MW-12	
MW-12-1	DRY
MW-12-2	1.20
MW-12-3	0.18 U
MW-12-4	0.19 U
MW-12-5	3.50

MW-4	
MW-4-1	DRY
MW-4-2	0.18 U
MW-4-4	0.18 U
MW-4-5	0.19U/0.18U

MW-17	
MW-17-1	DRY
MW-17-2	0.18 U
MW-17-3	0.37J/0.53J
MW-17-4	0.36 J
MW-17-5	0.17 U

MW-5	
MW-5	DRY



- Legend**
- Deep Multi-Port Monitoring Well
 - Shallow Monitoring Well Location
 - Municipal Production Well
 - JPL Facility Boundary
 - Approximate Location of Thrust Fault
 - Groundwater Flow Direction

MW-8
1) 0.5 U

Well ID
Screen number
Concentration in nanograms per liter
J = Detected estimated value
U = Not detected
NA = Not Analyzed

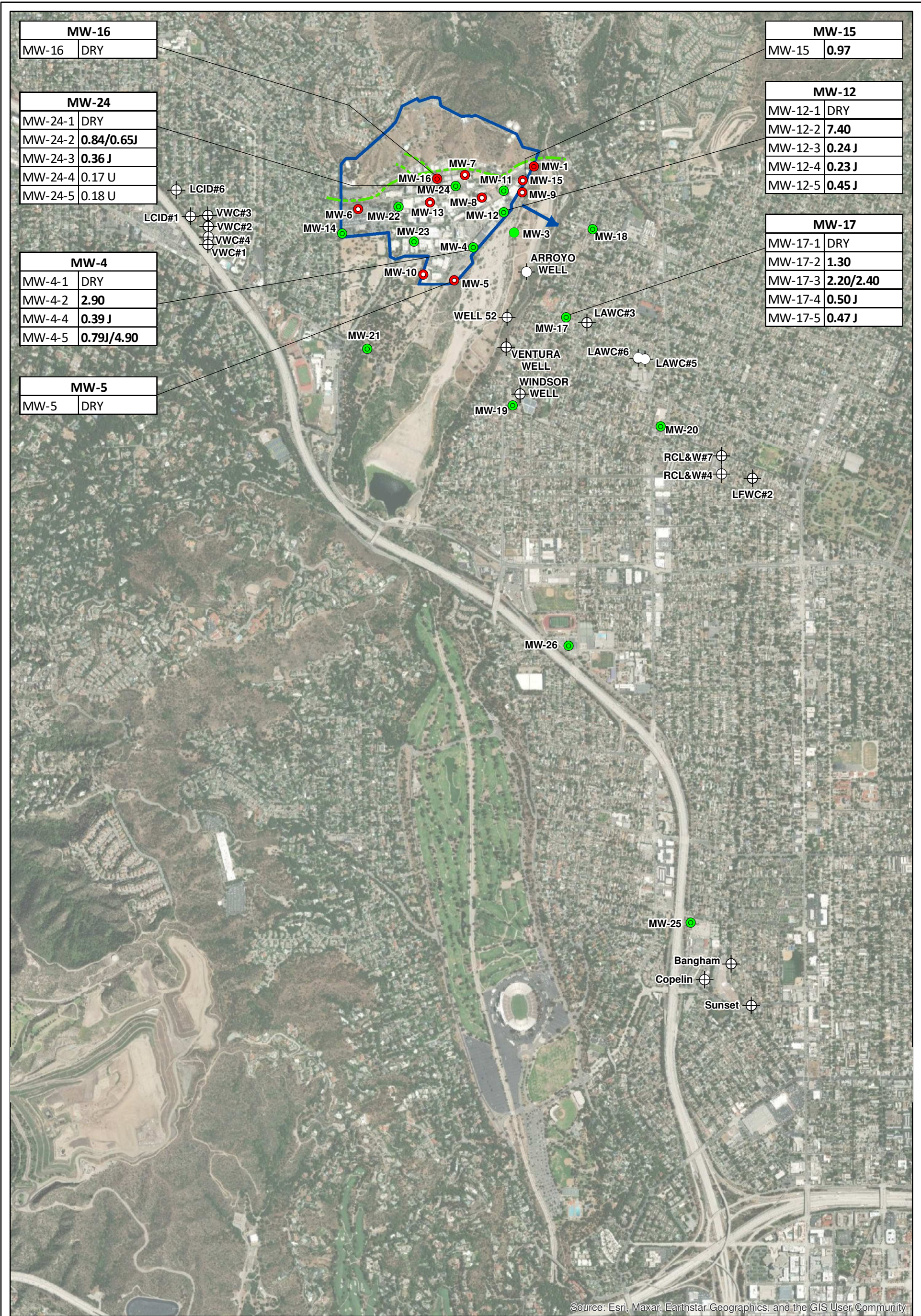
Bold font indicates detected concentration below the screening level;
Red font indicates concentration exceeds screening level.

Source: Esri, Maxar, Earthstar Geographics, and the GIS User Community



PFNA - Perfluorononanoic Acid

DESIGNED BY JHG	JPL - Pasadena, CA	Figure A-2
DRAWN BY JHG		
CHECKED BY DC	Contract No: W912PL21D0021	April 2023



MW-16	
MW-16	DRY

MW-15	
MW-15	0.97

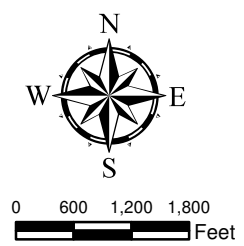
MW-24	
MW-24-1	DRY
MW-24-2	0.84/0.65J
MW-24-3	0.36 J
MW-24-4	0.17 U
MW-24-5	0.18 U

MW-12	
MW-12-1	DRY
MW-12-2	7.40
MW-12-3	0.24 J
MW-12-4	0.23 J
MW-12-5	0.45 J

MW-4	
MW-4-1	DRY
MW-4-2	2.90
MW-4-4	0.39 J
MW-4-5	0.79J/4.90

MW-17	
MW-17-1	DRY
MW-17-2	1.30
MW-17-3	2.20/2.40
MW-17-4	0.50 J
MW-17-5	0.47 J

MW-5	
MW-5	DRY



- Legend**
- Deep Multi-Port Monitoring Well
 - Shallow Monitoring Well Location
 - Municipal Production Well
 - JPL Facility Boundary
 - Approximate Location of Thrust Fault
 - Groundwater Flow Direction

MW-8
1) 0.5 U

Well ID
 Screen number
 Concentration in nanograms per liter
 J = Detected estimated value
 U = Not detected
 NA = Not Analyzed

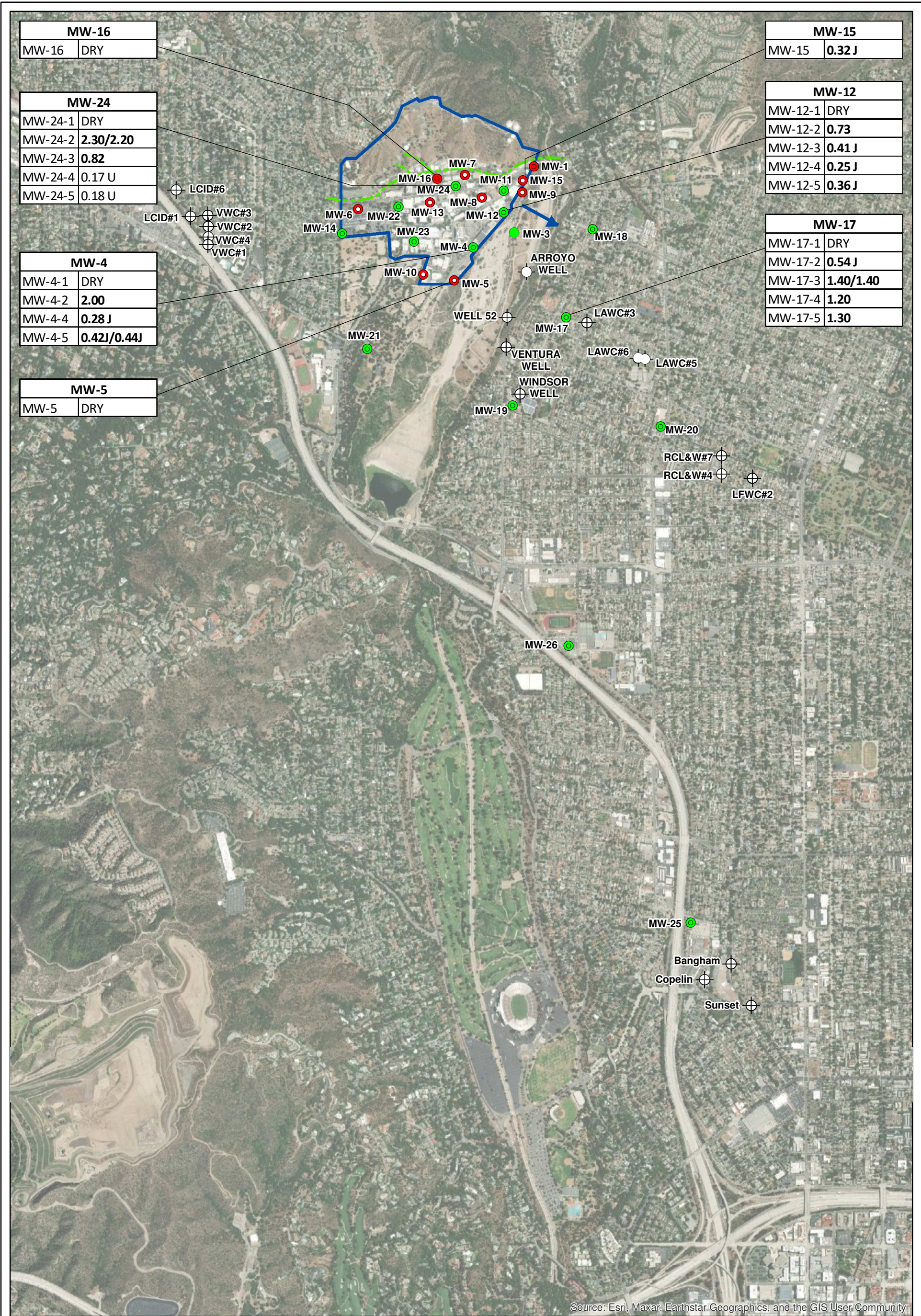
Bold font indicates detected concentration below the screening level;
 Red font indicates concentration exceeds screening level.

Source: Esri, Maxar, Earthstar Geographics, and the GIS User Community



PFBS - Perfluorobutanesulfonic Acid

DESIGNED BY JHG	JPL - Pasadena, CA	Figure A-3
DRAWN BY JHG		
CHECKED BY DC	Contract No: W912PL21D0021	April 2023



MW-16	
MW-16	DRY

MW-15	
MW-15	0.32 J

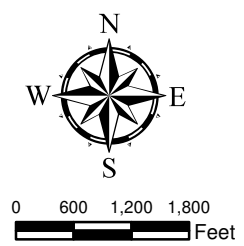
MW-24	
MW-24-1	DRY
MW-24-2	2.30/2.20
MW-24-3	0.82
MW-24-4	0.17 U
MW-24-5	0.18 U

MW-12	
MW-12-1	DRY
MW-12-2	0.73
MW-12-3	0.41 J
MW-12-4	0.25 J
MW-12-5	0.36 J

MW-4	
MW-4-1	DRY
MW-4-2	2.00
MW-4-4	0.28 J
MW-4-5	0.42J/0.44J

MW-17	
MW-17-1	DRY
MW-17-2	0.54 J
MW-17-3	1.40/1.40
MW-17-4	1.20
MW-17-5	1.30

MW-5	
MW-5	DRY



- Legend**
- Deep Multi-Port Monitoring Well
 - Shallow Monitoring Well Location
 - ⊕ Municipal Production Well
 - JPL Facility Boundary
 - Approximate Location of Thrust Fault
 - Groundwater Flow Direction

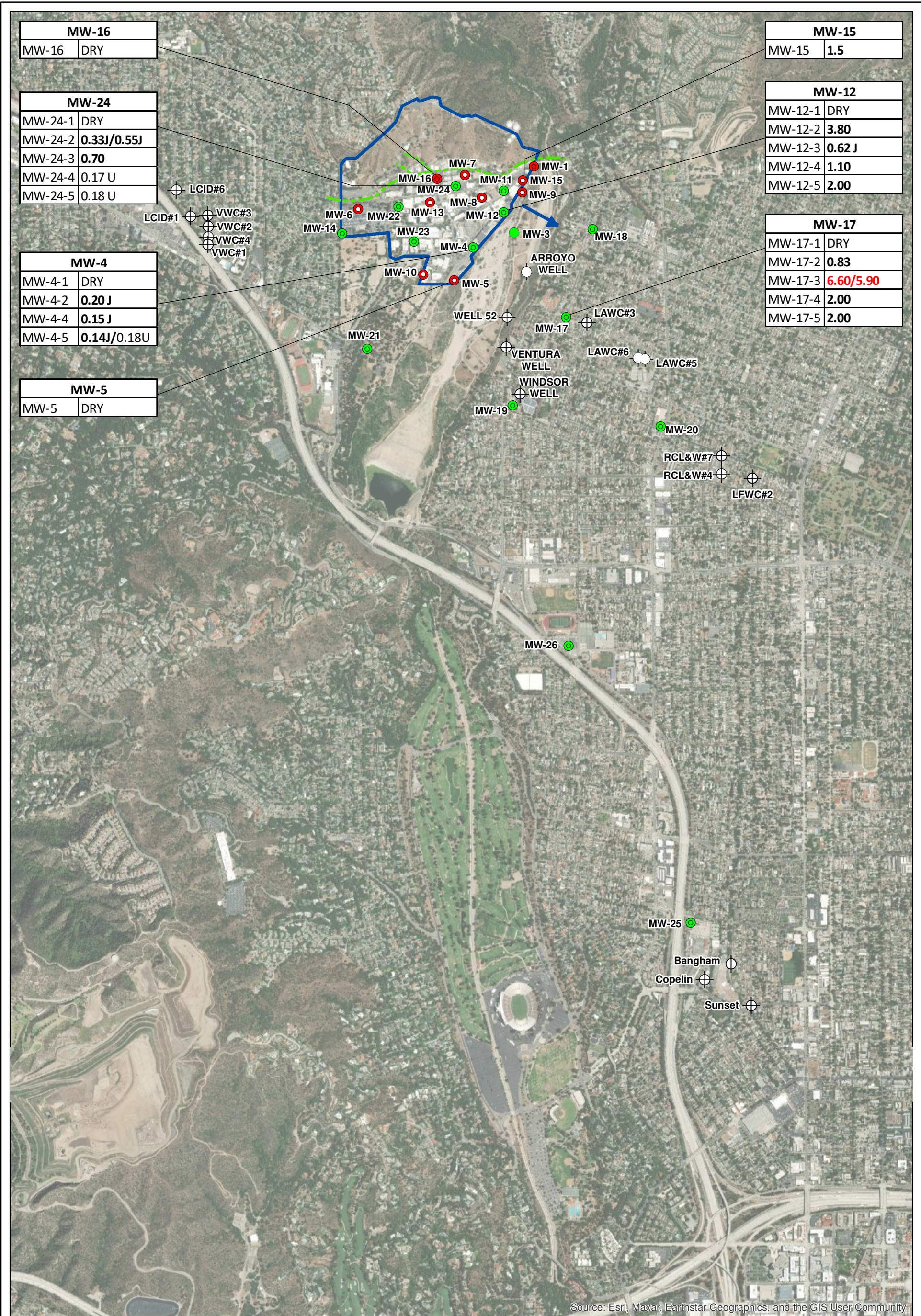
Well ID
 MW-8
 1) 0.5 U
 Screen number
 Concentration in nanograms per liter
 J = Detected estimated value
 U = Not detected
 NA = Not Analyzed
 Bold font indicates detected concentration below the screening level;
 Red font indicates concentration exceeds screening level.

Source: Esri, Maxar, Earthstar Geographics, and the GIS User Community



PFHxS - Perfluorohexane Sulfonate

DESIGNED BY JHG	JPL - Pasadena, CA	Figure A-4
DRAWN BY JHG		
CHECKED BY DC	Contract No: W912PL21D0021	April 2023



MW-16	
MW-16	DRY

MW-15	
MW-15	1.5

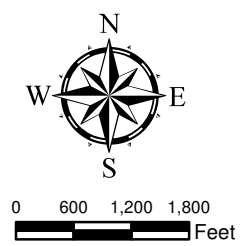
MW-24	
MW-24-1	DRY
MW-24-2	0.33J/0.55J
MW-24-3	0.70
MW-24-4	0.17 U
MW-24-5	0.18 U

MW-12	
MW-12-1	DRY
MW-12-2	3.80
MW-12-3	0.62 J
MW-12-4	1.10
MW-12-5	2.00

MW-4	
MW-4-1	DRY
MW-4-2	0.20 J
MW-4-4	0.15 J
MW-4-5	0.14J/0.18U

MW-17	
MW-17-1	DRY
MW-17-2	0.83
MW-17-3	6.60/5.90
MW-17-4	2.00
MW-17-5	2.00

MW-5	
MW-5	DRY



- Legend**
- Deep Multi-Port Monitoring Well
 - Shallow Monitoring Well Location
 - ⊕ Municipal Production Well
 - JPL Facility Boundary
 - Approximate Location of Thrust Fault
 - Groundwater Flow Direction

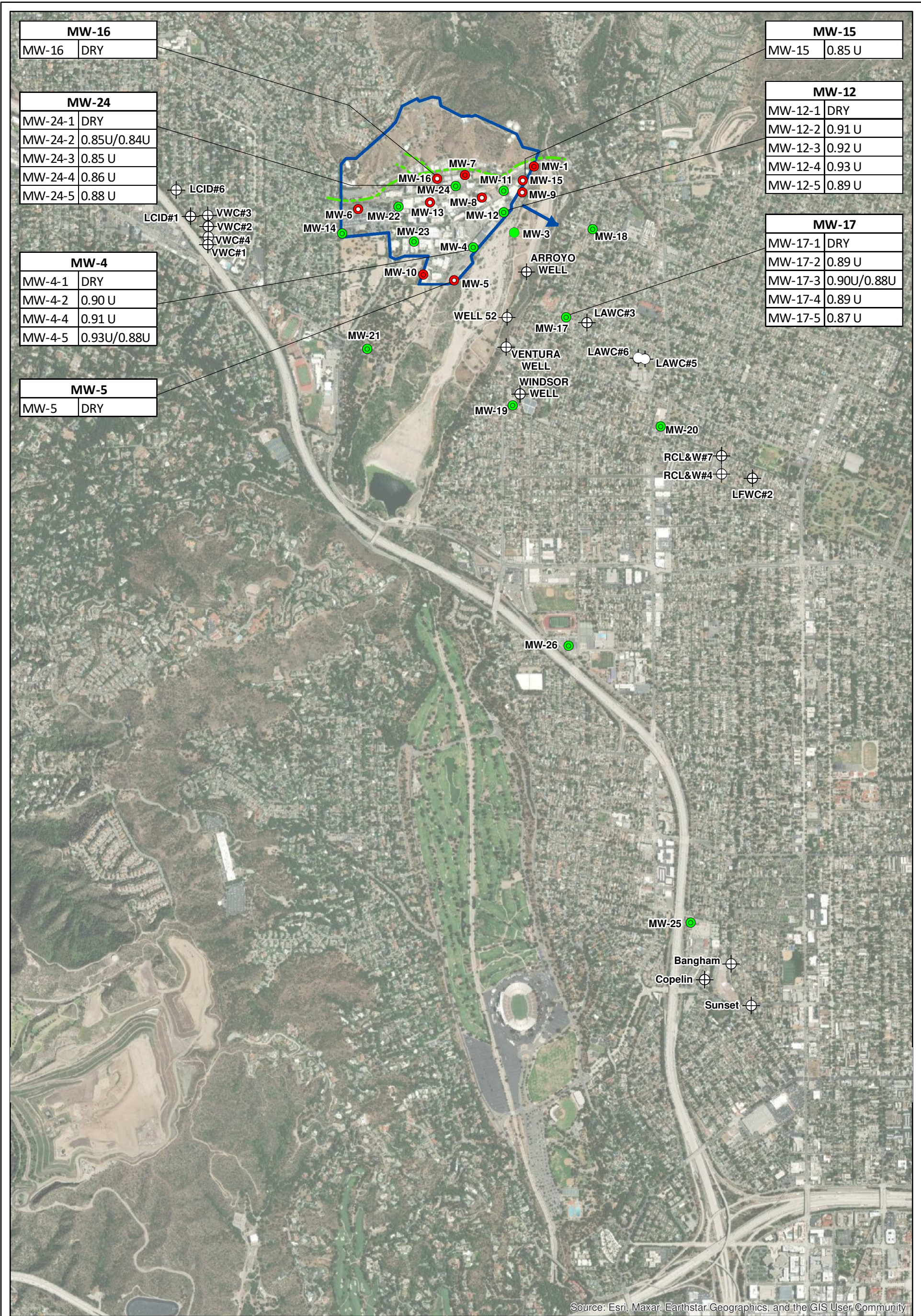
Well ID
 MW-8
 1) 0.5 U
 Screen number
 Concentration in nanograms per liter
 J = Detected estimated value
 U = Not detected
 NA = Not Analyzed
 Bold font indicates detected concentration below the screening level;
 Red font indicates concentration exceeds screening level.



PFOS - Perfluorooctanesulfonic Acid

DESIGNED BY JHG	JPL - Pasadena, CA	Figure A-5
DRAWN BY JHG		
CHECKED BY DC	Contract No: W912PL21D0021	April 2023

Source: Esri, Maxar, Earthstar Geographics, and the GIS User Community



MW-16	
MW-16	DRY

MW-15	
MW-15	0.85 U

MW-24	
MW-24-1	DRY
MW-24-2	0.85U/0.84U
MW-24-3	0.85 U
MW-24-4	0.86 U
MW-24-5	0.88 U

MW-12	
MW-12-1	DRY
MW-12-2	0.91 U
MW-12-3	0.92 U
MW-12-4	0.93 U
MW-12-5	0.89 U

MW-4	
MW-4-1	DRY
MW-4-2	0.90 U
MW-4-4	0.91 U
MW-4-5	0.93U/0.88U

MW-17	
MW-17-1	DRY
MW-17-2	0.89 U
MW-17-3	0.90U/0.88U
MW-17-4	0.89 U
MW-17-5	0.87 U

MW-5	
MW-5	DRY



- Legend**
- Deep Multi-Port Monitoring Well
 - Shallow Monitoring Well Location
 - ⊕ Municipal Production Well
 - JPL Facility Boundary
 - Approximate Location of Thrust Fault
 - Groundwater Flow Direction

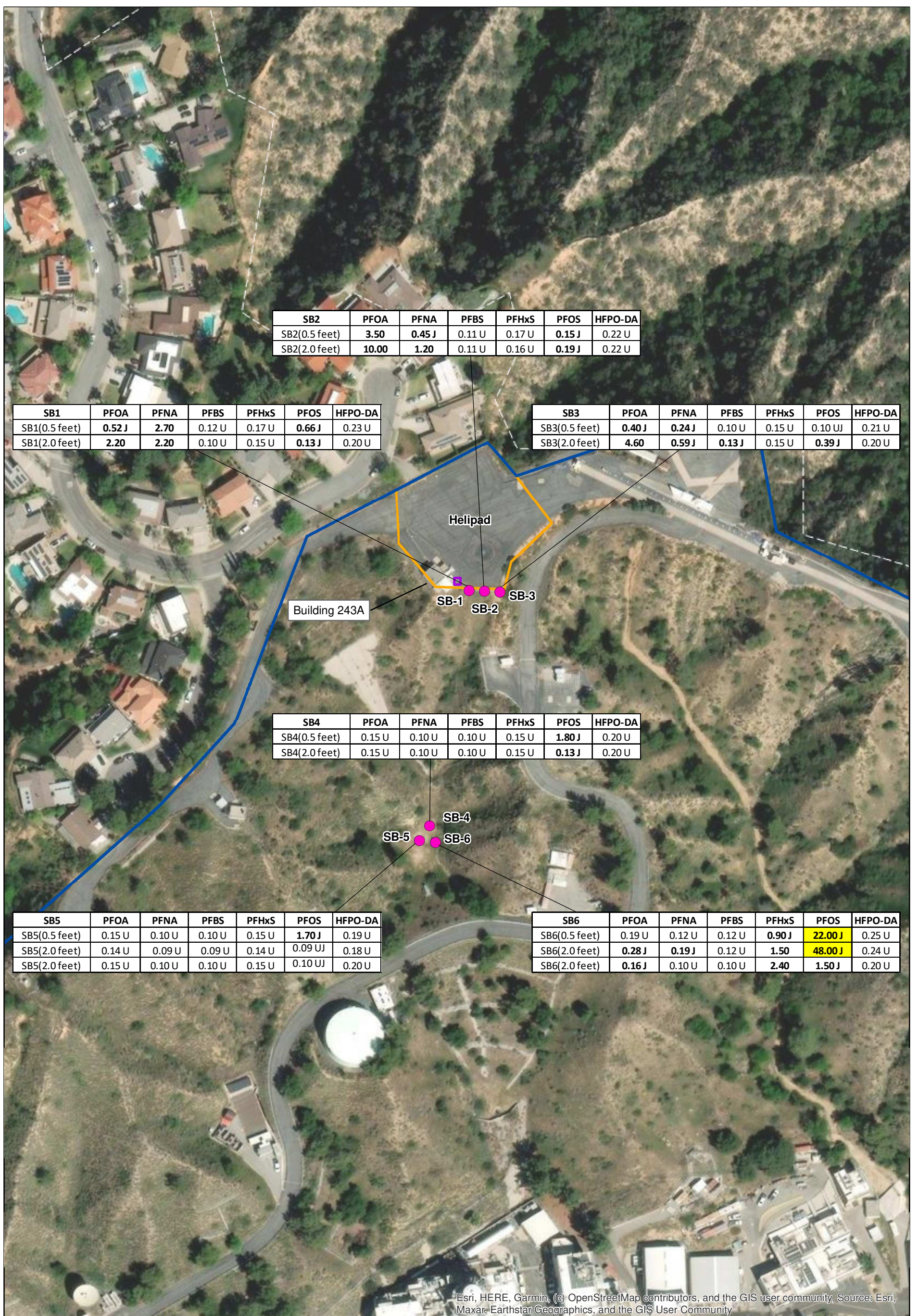
Well ID
 MW-8
 1) 0.5 U
 Screen number
 Concentration in nanograms per liter
 J = Detected estimated value
 U = Not detected
 NA = Not Analyzed
 Bold font indicates detected concentration below the screening level;
 Red font indicates concentration exceeds screening level.

Source: Esri, Maxar, Earthstar Geographics, and the GIS User Community



HFPO-DA (GenX Chemicals)
 Hexafluoropropylene Oxide Dimer Acid

DESIGNED BY JHG	JPL - Pasadena, CA	Figure A-6
DRAWN BY JHG		
CHECKED BY DC	Contract No: W912PL21D0021	April 2023



SB2	PFOA	PFNA	PFBS	PFHxS	PFOS	HFPO-DA
SB2(0.5 feet)	3.50	0.45 J	0.11 U	0.17 U	0.15 J	0.22 U
SB2(2.0 feet)	10.00	1.20	0.11 U	0.16 U	0.19 J	0.22 U

SB1	PFOA	PFNA	PFBS	PFHxS	PFOS	HFPO-DA
SB1(0.5 feet)	0.52 J	2.70	0.12 U	0.17 U	0.66 J	0.23 U
SB1(2.0 feet)	2.20	2.20	0.10 U	0.15 U	0.13 J	0.20 U

SB3	PFOA	PFNA	PFBS	PFHxS	PFOS	HFPO-DA
SB3(0.5 feet)	0.40 J	0.24 J	0.10 U	0.15 U	0.10 UJ	0.21 U
SB3(2.0 feet)	4.60	0.59 J	0.13 J	0.15 U	0.39 J	0.20 U

SB4	PFOA	PFNA	PFBS	PFHxS	PFOS	HFPO-DA
SB4(0.5 feet)	0.15 U	0.10 U	0.10 U	0.15 U	1.80 J	0.20 U
SB4(2.0 feet)	0.15 U	0.10 U	0.10 U	0.15 U	0.13 J	0.20 U

SB5	PFOA	PFNA	PFBS	PFHxS	PFOS	HFPO-DA
SB5(0.5 feet)	0.15 U	0.10 U	0.10 U	0.15 U	1.70 J	0.19 U
SB5(2.0 feet)	0.14 U	0.09 U	0.09 U	0.14 U	0.09 UJ	0.18 U
SB5(2.0 feet)	0.15 U	0.10 U	0.10 U	0.15 U	0.10 UJ	0.20 U

SB6	PFOA	PFNA	PFBS	PFHxS	PFOS	HFPO-DA
SB6(0.5 feet)	0.19 U	0.12 U	0.12 U	0.90 J	22.00 J	0.25 U
SB6(2.0 feet)	0.28 J	0.19 J	0.12 U	1.50	48.00 J	0.24 U
SB6(2.0 feet)	0.16 J	0.10 U	0.10 U	2.40	1.50 J	0.20 U

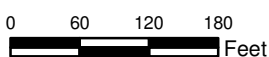
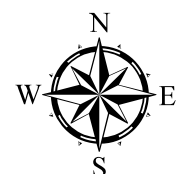
Esri, HERE, Garmin, (c) OpenStreetMap contributors, and the GIS user community, Source: Esri, Maxar, Earthstar Geographics, and the GIS User Community

Legend

- Soil Boring Location
- Storm Drain (location approximate)
- AOPC 1: Helipad
- JPL Facility Boundary

Concentrations in ng/g
 J = Detected estimated value
 U = Not detected

Bold font indicates detected concentration below the screening level;
 Bold font with yellow highlight indicates concentration exceeds screening level.



AOPC 1: Soil Sampling Locations

DESIGNED BY JHG	JPL - Pasadena, CA	Figure A-7
DRAWN BY JHG		
CHECKED BY DC	Contract No: W912PL21D0021	April 2023